

Meet by
Choice

Not by
Chance

2 Affordable Plans

designed by a

marriage counselor,

based upon years of

university research, to

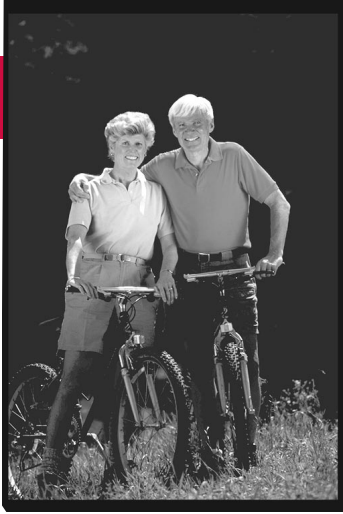
help you find the

one you love

Single Search Massachusetts

67 Montvale Avenue
Suite #302
Stoneham, MA 02180
617.438.9960
800.859.5553

Single Search Massachusetts 



How Do I Get Started?

Signing up for Single Search is easy and takes just a little bit of your time. We suggest you begin with our Standard Service first.

- 1) Describe yourself and the person you would like to meet by completing the "Profile" enclosed.
- 2) Sign the waiver.
- 3) Make a check out to Single Search for \$99, Mail and let our computer system go to work finding your match.

You will then be mailed a list of clients who match your specifications by 60% or more. The list contains their zip codes so you know where they live and the percentages that each matches you. From that list, you can order their complete, detailed profile. You can base your decision on either their geographic desirability or how close they come to being 100% of what you seek. Profiles are only \$7.00 each.

Clients are not obligated to order profiles. You may wait until your profile is ordered and someone contacts you, or you may take the initiative. But, remember, if your goal is to find a life-partner, the more people you meet each month, the faster probability odds will work in your favor.

Enhanced Services



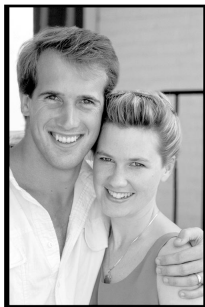
While most of our customers are quite satisfied with our Standard Service, some may want a more in-depth plan. One that features more personalized care to your situation. With our Enhanced Service, you will be scheduled a personal interview with one of our qualified counselors. The appointments usually last about an hour and covers a more comprehensive "psycho/social" review.

Then, each month for the number of months in your enhanced contract, the computer will match as it normally does. However, instead of these matches being mailed directly to you, a counselor will interview, by phone, all of the potential matches the computer has selected for you, for a truer match, based on the criteria developed in the initial interview process.

With those deemed most suitable for you, notes will be made. These profiles will be mailed to you together with an invoice. Each profile mailed to you is \$7.00. Payment is due upon billing and is required prior to the next month's service.

Enhanced Services cont

Finally, the enhanced service involves one-half hour of pre-scheduled, telephone time per month for us to review your file. Added up, the enhanced services will provide you with a greater accuracy than the Standard Plan. It insures that the nuances of life are not overlooked and that means less risk in those all important first dates. Please call today, to discuss this option and for costs.



Listen to Our Clients

"I discovered more about myself"

"I found out who truly meets my needs"

"I increased my self esteem"

"I enhanced my social life"

"I received a steady stream of partners with whom compatibility had been established"

"I no longer had to settle for second best or stay in unproductive relationships because my dating choices were not limited"

"With Single Search, I met dozens of appropriate men every month"

So what's stopping you! Fill out the enclosed forms or give us a call at 617.742.1608

Single Search Massachusetts





The Single Search Advantage

Single Search is a dynamic computer matchmaking service offering an accurate, respectable way for Singles to safely meet highly compatible partners. Founded in Florida in 1988, Single Search is based upon university research and surveys of what singles value most in relationships. The result is a comprehensive index describing **Body, Mind and Spirit**. The System allows you to match with those who share or compliment your beliefs, interests, habits, education, income, profession and goals.

The **difference** between Single Search and other match-making services is the software. Our custom designed, state of the art program matches characteristics and traits, then cross-matches, to ensure that both parties have significant needs met. Only when this standard is achieved by 60% or more do we report it to your match letter.

♥ Safe and Confidential

Only Single Search members are referred to you. You decide how you wish to be contacted - write only, call only, call or write, or write c/o Single Search. If you do not wish your last name to appear on your profile, tell us and it will never be released.

♥ Accurate

Our matching process is so superior that you will only receive those you are ideally compatible. You select the individual traits you need in a partner and that is what you get.

♥ Affordable

Single Search's Fees are amongst the lowest in the nation. We offer quality matching and rapid turn-around when you order profiles.

♥ Two Plans

Our standard program - starts at \$99 for the first 6 months.

Our Enhanced Program - A customized program for those who desire more personalized attention.

